

lsid:zoobank.org:pub:65F3F038-63EB-4521-B181-DD4D37DA5562

New species of *Campsicnemus* Haliday from East Maui, Hawaiian Islands (Diptera: Dolichopodidae) with a note resurrecting *Campsicnemus uniseta* Hardy & Kohn¹

NEAL L. EVENHUIS 

Hawaii Biological Survey, Bishop Museum, 1525 Bernice Street, Honolulu, Hawai‘i 96817-2704, USA; email: neale@bishopmuseum.org

Abstract. Eleven new species of *Campsicnemus* from East Maui, Hawaiian Islands are described and illustrated: *Campsicnemus carsoni*, n. sp., *C. ele*, n. sp., *C. hanawi*, n. sp., *C. jubaris*, n. sp., *C. kakaka*, n. sp., *C. kaupo*, n. sp., *C. labiloides*, n. sp., *C. magnaccai*, n. sp., *C. nakula*, n. sp., *C. setitibia*, n. sp., *C. steyskali*, n. sp. The holotype of *Campsicnemus uniseta* Hardy & Kohn is re-examined and resurrected from synonymy with *C. albitarsus* Hardy & Kohn.

INTRODUCTION

The Hawaiian Islands are home to an incredible diversity of species of the predatory dolichopodid genus *Campsicnemus* Haliday with an estimated 230–250 species found only on this island archipelago. Recent taxonomic studies on this group in the Hawaiian Islands (e.g., Evenhuis, 2003, 2007, 2011, 2012a, 2012b, 2013a, 2015, 2016, 2018, 2019, 2023, 2024, 2025; Evenhuis & O’Grady, 2010) have shown that even since the revision of the genus in Hawai‘i by Hardy & Kohn (1964), there are still a large number of new species being discovered on all the islands.

The current study is restricted to just East Maui in the Hawaiian Islands. It harbors an interesting diversity of species and was last dealt with in Evenhuis (2011). Since then, a number of new species have been discovered through Malaise and yellow pan trapping in recent years. Of the 50 species of *Campsicnemus* now known to occur on Maui, 11 of them are here described as new to science: *Campsicnemus carsoni*, n. sp., *C. ele*, n. sp., *C. hanawi*, n. sp., *C. jubaris*, n. sp., *C. kakaka*, n. sp., *C. kaupo*, n. sp., *C. labiloides*, n. sp., *C. magnaccai*, n. sp., *C. nakula*, n. sp., *C. setitibia*, n. sp., *C. steyskali*, n. sp.

With the description of these new species, Maui [50 spp.] is now the second most speciose [to the Big Island of Hawai‘i; 51 spp.] in the Hawaiian chain for *Campsicnemus*.

MATERIAL AND METHODS

Specimens examined in this study derive primarily from collections of the Bishop Museum (BPBM) and the National Museum of Natural History, Washington, D.C. (USNM). Morphological terminology, description format, and abbreviations used in the description follow Evenhuis (2012b). Holotypes and paratypes of all new species are deposited in BPBM except for *C. jubaris*, n. sp. and *C. steyskali*, n. sp., which are deposited in USNM.

1. Contribution No. 2026-005 to the Hawaii Biological Survey.

Abbreviations used:

I, II, III	= fore, mid, and hind leg
C	= coxa
F	= femur
T	= tibia
MSSC	= male secondary sexual characters
ac	= acrostichal setae
dc	= dorsocentral setae
hm	= postpronotal setae
np	= notopleural setae
oc	= ocellar setae
pa	= post alar setae
ph	= posthumeral setae
sa	= supra-alar setae
sc	= scutellar setae
t	= tarsus
t1–5	= tarsomeres 1 to 5
vt	= vertical setae

TAXONOMY

- Camptosceles* Haliday, 1832: 357 (as subgenus of *Medeterus* Meigen, 1824). Type species: *Dolichopus scambus* Fallén, 1823 (by subsequent designation of Coquillett, 1910: 518). Suppressed by I.C.Z.N., 1958: 349 (Opinion 531).
- Leptopezina* Macquart, 1835: 554. Type species: *Diastata gracilis* Meigen, 1820, by monotypy. *Nomen oblitum* (see Evenhuis, 2003: 3).
- Campsicnemus* Haliday in Walker, 1851: 187. Type species: *Dolichopus scambus* Fallén, 1823, by validation of I.C.Z.N., 1958: 351. *Nomen protectum* (see Evenhuis, 2003: 3).
- Camptoscelus* Kertész, 1909: 306 (unjustified replacement name for *Camptosceles* Haliday). Type species: *Dolichopus scambus* Fallén, 1823, automatic.

Including the new species described here, there are currently 205 described species of Hawaiian *Campsicnemus* (all endemic) known from this remote island group in the Pacific Ocean, with still more new species awaiting description. Study of specimens of this genus from French Polynesia (Societies, Marquesas, and Australs) show a similar high biodiversity with over 50 new species having been discovered and described in surveys from these islands (over 30 from the Marquesas alone) (see Evenhuis 2000, 2008, 2009, 2013b, 2016 for keys to species groups and descriptions of some of the species). Additional species in the Pacific occur westward as far as Fiji (undescribed species are known from Tonga and Fiji). As more trapping and collecting is done in suitable habitats on the south Pacific islands, more new species should be found.

Although molecular studies have indicated the Pacific species to be a separate clade from Nearctic and Palaearctic species (Goodman *et al.* 2014), it remains difficult to separate Pacific species from the Holarctic ones on the basis of morphology. The only character found thus far is the uniseriate lower occipital setae in the Pacific species but multiseriate in Holarctic species. Confounding this is the recent finding of species from India, Nepal, and Sri Lanka which have the lower occipital setae also uniseriate as in the Pacific species. Obviously, this area is ripe for further study.



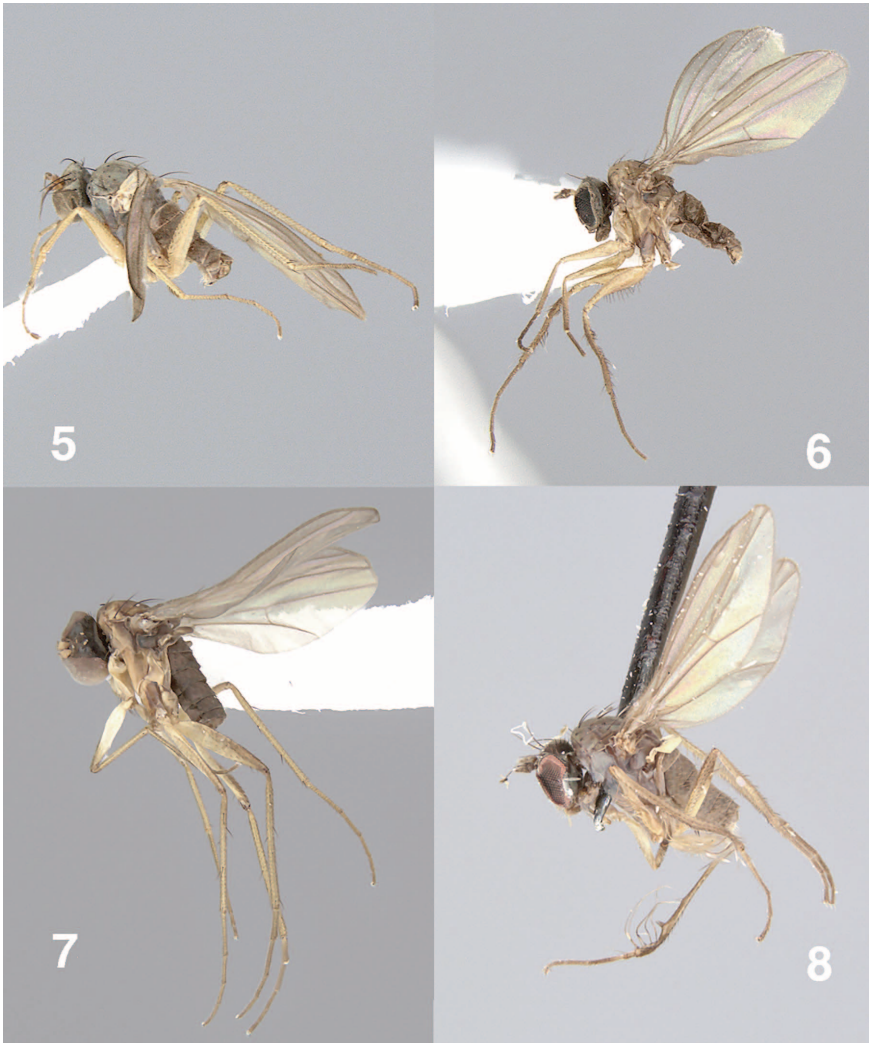
Figures 1–4. *Campsicnemus*, male habitus, lateral view. 1. *C. carsoni*, n. sp.; 2. *C. ele*, n. sp.; 3. *C. hanawi*, n. sp.; 4. *C. jubaris*, n. sp.

***Campsicnemus carsoni* Evenhuis, n. sp.**

(Figs. 1, 13)

Material Examined. *Holotype* ♂ (BPBMNT 0000016949) (pinned) from HAWAIIAN ISLANDS: **Maui (East):** Haleakalā, Waikau cabin, 6,400 ft [1,950 m], 18 Jun 1975, H. Burkhardt (BPBM). *Paratypes* (in fluid): 1♂, 6♀, Kahikinui, [20°40′31.712″N, 156°14′16.711″W], 17 Nov 2011, R. Peck, Malaise #2 (BPBM). Holotype and paratypes in BPBM.

Diagnosis. Similar to *Campsicnemus mundulus* Hardy & Kohn and *C. comatus* Hardy & Kohn based on the similar male mid tibial setation, but can be separated from them both by the subapical thorn-like setae subapically on the mid basitarsus (this setae not present in *C. mundulus* or *C. comatus*).



Figures 5–8. *Campsicnemus*, male habitus, lateral view. **5.** *C. kakaka*, n. sp.; **6.** *C. kaupo*, n. sp.; **7.** *C. labiloides*, n. sp.; **8.** *C. steyskali*, n. sp.

Description. Male (Fig. 1): Body length: 4.3 mm. Wing length: 4.5 mm.

Head: Face, front and clypeus yellow; oc and vt black, about two-thirds length of antennal arista; occiput, and vertex black, gray pollinose with blue-green highlights; face constricted at middle, eyes holoptic for a length of 6 ommatidia; palpus small, brown; proboscis brown, extending below eye in lateral view; antenna [postpedicel broken off in

holotype] with scape and pedicel yellowish; scape subcylindrical, length $1.5\times$ width; pedicel obconical, with ring of short spiky black setae subapically; postpedicel conical-elliptical, length $2\times$ to width, bluntly rounded apically; arista slightly longer than head height.

Thorax: Mesonotum brown, paler laterally, scutellum yellow laterally with brown stripe medially; disc of mesonotum darker brown than surrounding mesonotum; upper pleura brown, lower pleura and propleuron yellow; thoracic setae black: 4 dc; 2 np; 2 ph; 1 pa; 1 sc; numerous ac present; halter stem and knob yellow.

Legs: Yellow, except tarsal segments 2–5 brown; coxae with normal anteroapical setation; hind legs unmodified, without MSSC; fore basitarsus subequal in length to tibia, thin tapering to apex, with rows of dense short thick spicules (MSSC); FII with patch of ~ 10 strong black setae at basoventral $1/6$, remainder of venter bare, stiff hairs dorsally, thickest apically; TiII (Fig. 13) long, fairly straight, with 5 long strong black setae laterally on apical $1/3$, basal $1/2$ of lateral surface with mixture of long slightly wavy yellowish brown hairs and downcurved straight setae; posterior surface with short on basal half, longer and thicker on apical $1/2$ (MSSC); IIt₁ subequal in length to IIt₂, with black subapical thorn-like setae on lateral surface (MSSC). Remaining leg segments unmodified and without MSSC.

Wing: Smoky in radial cell, rest subhyaline, veins brown; posterior crossvein length less than $1/2$ apical segment of CuA₁.

Abdomen: Subshining black with blue-green highlights; tergal vestiture black. Hypopygium dark brown with brown cerci, not dissected.

Female: Unknown.

Etymology. The specific epithet honors the late Hampton Carson (1912–2004), whose collecting efforts in the islands have increased our knowledge of the Hawaiian Diptera fauna.

Campsicnemus ele Evenhuis, n. sp.

(Figs. 2, 14)

Material Examined. *Holotype* ♂ (BPBMENT 0000017562) and 1♂ *paratype* (in fluid) from HAWAIIAN ISLANDS: **Maui (East):** Waikamoi Forest Preserve, 22 Sep 2011, K.R. Goodman, stream water skaters (BPBM). Holotype and paratype in BPBM.

Diagnosis. Similar to *Campsicnemus truncatus* Hardy & Kohn (a member of the *C. tibialis* group of black water-skaters) but can be separated from it by the dichoptic eyes (holoptic in *C. truncatus*) and the fewer peg-like setae mesally on the male mid tibia.

Description. Male (Fig. 2): Body length: 2.2 mm. Wing length: 2.5 mm.

Head: Black; oc and vt black, about two-thirds length of antennal arista; face wide along entire length, eyes dichoptic for a width of 8–10 ommatidia; palpus conspicuous, brown; proboscis dark brown, extending below eye in lateral view; antenna with all segments yellowish brown; scape subcylindrical, length subequal to width; pedicel obconical, with ring of short spiky black setae subapically; postpedicel subtriangular, length $0.5\times$ width, acute apically; arista slightly longer than head height.

Thorax: With matte black mesonotum; pleura black except anepisternum gray pollinose surrounding prothoracic spiracle; thoracic setae black: 1+ 3 dc; 2 np; 2 ph; 1 pa; 1 sc; 2 rows of bifurcating ac; halter stem yellow brown, knob dark brown to black.



Figures 9–10. *Campsicnemus* antennae. 9. *C. hanawi*, n. sp.; 10. *C. steyskali*, n. sp.

Legs: Black; FII with row of a dozen short, stiff pointed setae ventrally, longest basally, gradually becoming short toward apex); TIII (Fig. 14) with row of 4 long, thick black peg-like setae on basal half of mesal surface and fine, downcurved hairs along entire mesal surface, lateral surface with row of stiff, downcurved setae, longest subapically (MSSC); IIt₁ short, about 1/3 length of IIt₂, strong thick black curved spur apically, 2 long setae apically on lateral surface (MSSC). Remaining leg segments unmodified and without MSSC.

Wing: Smoky, veins black.

Abdomen: Black; tergal vestiture black. Hypopygium black with dark brown cerci, not dissected.

Female: Unknown.

Etymology. The specific epithet derives from the Hawaiian *ele*, meaning black; referring to the all-black coloration of the species.

Campsicnemus hanawi Evenhuis, n. sp.

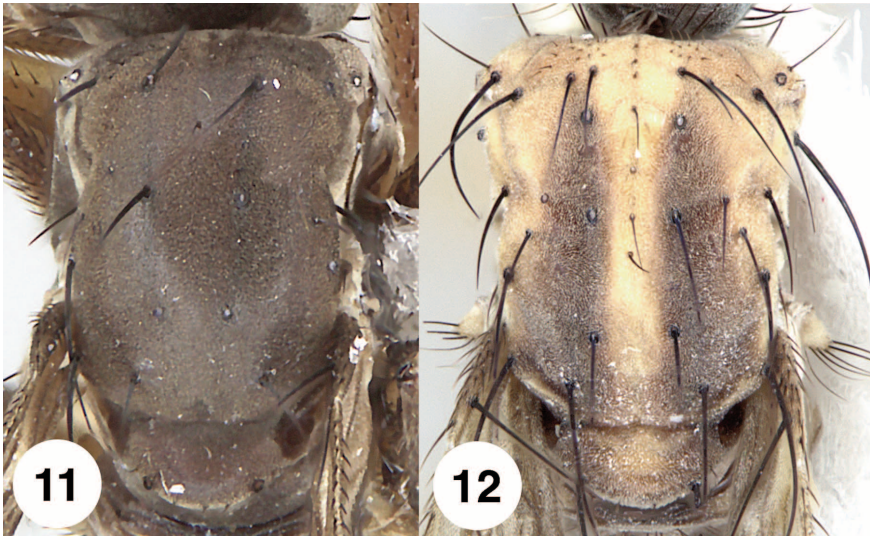
(Figs. 3, 9, 11, 15)

Material Examined. *Holotype* ♂ (BPBMNT 0000017572) (in fluid) from HAWAIIAN ISLANDS: **Maui (East):** Hanawi, [20.746582°N, 156.132529°W], [1,069 m], 24 May 2011, Malaise trap #1 (BPBM). *Holotype* in BPBM.

Diagnosis. Similar to *Campsicnemus kaupo*, n. sp. but differs in the long hairs on the mesal surface of the male mid tibia gradually getting longer from base to apex (these hairs the same length on the apical half in *C. kaupo*) and the postpedicel length subequal to width (2.5× longer than wide in *C. kaupo*).

Description. Male (Fig. 3): Body length: 2.3 mm. Wing length: 2.5 mm.

Head: Face, front and clypeus dark brown; oc and vt black, about two-thirds length of antennal arista; occiput, and vertex black; face constricted at middle, eyes holoptic for



Figures 11–12. *Campsicnemus*, male thoraces, dorsal view. **11.** *C. hanawi*, n. sp.; **12.** *C. magnaccai*, n. sp.

a length of 4 ommatidia; palpus small, dark brown; proboscis dark brown, extending below eye in lateral view; antenna (Fig. 9) with scape and pedicel brown; scape subcylindrical, length subequal to width; pedicel obconical, with ring of short spiky black setae subapically; postpedicel black, subtriangular, length 1/2 width, acute apically; arista slightly longer than head height.

Thorax (Fig. 11): Mesonotum, scutellum, and pleura dark brown, paler on postalar callus; mesonotum anteriorly with sort fine white hairs; thoracic setae black: 3 dc; 2 np; 2 ph; 1 + 1 pa; 1 sc; 2 white, fine ac; halter stem and knob yellow.

Legs: Coxae matte black, fore femur yellow, remainder of legs brown; coxae with normal anteroapical setation; all femora and fore and hind legs unmodified and without MSSC; TiII (Fig. 15) long, slightly sinuous, with row of minute spiky setae mesally, laterally with long, downcurved brown setae, gradually becoming longer from base to apex; apically with three strong long black setae. IIt₁ and remaining leg segments unmodified and without MSSC.

Wing: Pale smoky brown, veins black; posterior crossvein length less than 1/2 apical segment of CuA₁.

Abdomen: Dark brown; tergal vestiture black. Hypopygium black with brown cerci, not dissected.

Female: Unknown.

Etymology. The specific epithet refers to the type locality of Hanawī, East Maui.



Figures 13–15. *Campsicnemus*, male midlegs. 13. *C. carsoni*, n. sp. 14. *C. ele*, n. sp. 15. *C. hanawi*, n. sp.

***Campsicnemus jubaris* Evenhuis, n. sp.**

(Figs. 4, 16, 17)

Material Examined. *Holotype* ♂ (USNMENT 01353599) (pinned) from HAWAIIAN ISLANDS: **Maui (East):** Waikamoi Flume Trail, 4,000 ft [1,020 m], 2 Jul 1968, G.C. Steyskal (USNM).

Diagnosis. Similar to *Campsicnemus uniseta* Hardy & Kohn in having a long setae extending to the second midtarsal segment, but can be separated from it by the long seta arising from the base of the basitarsus (arising from the apex of the midtibia in *C. uniseta*) and the second midtarsal segment being shorter than the mid basitarsus (this tarsal segment much longer than the mid basitarsus in *C. uniseta*).

Description. Male (Fig. 4): Body length: 1.9 mm. Wing length: 2.0 mm.

Head: Face, front and clypeus black, gray pollinose; oc and vt black, about two-thirds length of antennal arista; occiput, and vertex black, gray pollinose; face constricted at middle, eyes dichoptic for a width of 2 ommatidia; palpus brown; proboscis brown, extending below eye in lateral view; antenna with all segments black; scape subcylindrical, length subequal to width; pedicel obconical, with ring of short spiky black setae subapically; postpedicel triangular, length 2× width, slightly rounded apically; arista slightly longer than head height.



Figures 16–18. *Campsicnemus*, male legs. **16.** *C. jubaris*, n. sp., midtibia and tarsi **17.** *C. jubaris*, n. sp., detail of mid basitarsus **18.** *C. kakaka*, n. sp., **A.** fore tibia. **B.** mid tibia.

Thorax: Mesonotum and scutellum subshining brown, with magenta highlights, paler on postalar callus; scutellum with shining brown medial mark; pleura brown, gray pollinose; thoracic setae black: 3 dc; 2 np; 2 ph; 1 + 1 pa; 1 sc; 0 ac; halter stem brown, knob dark brown.

Legs: Fore coxae yellow, remainder of coxae brown, gray pollinose, femora and tibiae yellowish, tarsi brown; coxae with normal anteroapical setation; fore and hind legs unmodified and without MSSC; FII with row of fine pointed setae along all of ventral surface; TiII (Fig. 16) long, slightly bowed, with row of 3–4 thin stiff brown setae on basal 1/3 of mesal surface and on entire lateral surface (MSSC). IIt₁ (Fig. 17) about 1.5× length of IIt₂, with row of 6 long curved brown setae on lateral surface, appearing to be fused to single long setae arising from base of segment and extending to past middle of IIt₂ (MSSC). Remaining leg segments unmodified and without MSSC.

Wing: Smoky hyaline, veins brown; posterior crossvein length less than 1/2 apical segment of CuA₁.

Abdomen: Brown; tergal vestiture black. Hypopygium dark brown with brown cerci, not dissected.

Female: Unknown.

Etymology. The specific epithet derives from the Latin *jubaris*, meaning “the radiance of the heavenly bodies”. It is treated as a noun in apposition.

Campsicnemus kakaka Evenhuis, n. sp.

(Figs. 5, 18)

Material Examined. *Holotype* ♂ (BPBMENT 0000017641) (pinned) and 80♂ *paratypes* (in fluid) from HAWAIIAN ISLANDS: **Maui (East):** Kahikinui, 20°40'31.712"N, 156°14'16.711"W, 29 Sep 2011, R. Peck, Malaise #2 (BPBM). Holotype and paratypes in BPBM.

Diagnosis. Similar to *Campsicnemus bicrenatus* Hardy & Kohn by the midtibial setation, but can be separated from it by the flared apex of the fore basitarsus (fore basitarsus in *C. bicrenatus* not modified) and the male mid tibia bent 45° on the basal 2/5 (straight in *C. bicrenatus*). Note: the illustration in Hardy & Kohn (1964: 46, fig. 3a) is not accurate. There are two separate setal patches, but the setae are not on swellings as exaggerated as the drawing depicts; the swellings are very slight.

Description. Male (Fig. 5): Body length: 1.8 mm. Wing length: 2.0 mm.

Head: Face, front and clypeus brown, gray pollinose; oc and vt black, about two-thirds length of antennal arista; occiput, and vertex black, gray pollinose, with magenta highlights; face constricted at middle, eyes dichoptic for width of 2 ommatidia; palpus small, brown; proboscis brown, extending below eye in lateral view; antenna with all segments yellowish brown; scape subcylindrical, length subequal to width; pedicel obconical, with ring of short spiky black setae subapically; postpedicel subtriangular, length subequal to width, acute apically; arista shorter than head height.

Thorax: Mesonotum, scutellum and pleura (except dark brown anepimeron) brown, gray pollinose, paler on postalar callus; thoracic setae black: 4 dc; 2 np; 2 ph; 1 + 1 pa; 1 sc; 0 ac; halter stem yellow, knob white.

Legs: Fore coxa yellow; mid and hind coxae brown, gray pollinose, concolorous with thorax; remainder of legs yellowish; coxae with normal anteroapical setation; hind legs unmodified and without MSSC; Fore femur and tibia unmodified (with out MSSC); It_2 (Fig. 18A) swollen basally and flared apically (It_2 inserted subapically), apex with 2 curved setae (MSSC); FII with 6-7 short strong setae ventrobasally (MSSC); TiII (Fig. 18B) bent ca. 45° at basal 1/3, with stiff, spiky setae along mesal surface; lateral surface with three dense patches of setae: basalmost patch at basal 1/4, consisting of stiff brown erect setae; middle patch consisting of numerous close-set short downcurved black setae; apical patch consisting of ca. 6 setae; one strong apical seta apicomeresally (MSSC). IIt_1 length about equal to IIt_2 , without MSSC. Remaining leg segments unmodified and without MSSC.

Wing: Subhyaline, veins brown.

Abdomen: Brown; tergal vestiture black. Hypopygium brown with brown cerci, not dissected.

Female: Unknown.

Etymology. The specific epithet derives from the Hawaiian *kakaka*, meaning “crooked” or “bent”; referring to the bent mid tibia of the male.

Campsicnemus kaupo Evenhuis, n. sp.

(Figs. 6, 19)

Material Examined. *Holotype* ♂ (BPBMENT 0000017543) (pinned) and 2♂ *paratypes* from HAWAIIAN ISLANDS: **Maui (East):** Maunawainui, [20.705003°N, 156.12556°W], 6,540 ft [1,993



Figures 19–21. *Campsicnemus*, male midlegs. **19.** *C. kaupō*, n. sp. **20.** *C. labiloides*, n. sp. **21.** *C. magnaccai*, n. sp.

m], 20 Jul 2006, R. Peck, Malaise #5 (all in BPBM). *Other paratypes* (all in fluid): 2♂, Maunawainui, [20.699767°N, 156.13154°W], 6,940 [2,115 m], 24 May 2006, R. Peck, Malaise #3 (BPBM); 1♂, Maunawainui, [20.690017°N, 156.129344°W], 5,260 ft [1,603 m], 25 May 2006, R. Peck, Malaise #1 (BPBM). Holotype and paratypes in BPBM.

Diagnosis. Fitting in the group with a contorted male mid tibia and basitarsus without long ciliation like *Campsicnemus dicondylus* Hardy & Kohn, *C. rhyphopus* Hardy & Kohn, and *C. terricola* Hardy & Kohn, but can be separated from them by the apex of the male mid femur not having a apicoventral notch (present in the other species) and the long setae extending the length along the lateral surface of the mid tibia (in patches in the other species). It is most like *C. terricola* from Hawai'i Island but differs from it by the lack of a triangular basomesal projection (present in *C. terricola*).

Description. Male (Fig. 6): Body length: 1.8 mm. Wing length: 2.0 mm.

Head: Face, front and clypeus yellowish brown, gray pollinose; oc and vt black, about two-thirds length of antennal arista; occiput, and vertex black; face constricted at middle, eyes dichoptic for a width of 2 ommatidia; palpus small, brown; proboscis brown, extending below eye in lateral view; antenna with scape and pedicel yellowish brown, postpedicel brown; scape subcylindrical, length 1.5× width; pedicel obconical, with ring of short spiky black setae subapically; postpedicel subtriangular, length 2× width, acute apically; arista slightly longer than head height.

Thorax: Mesonotum, scutellum and pleura (except dark brown laterotergite) brown, paler on postalar callus; thoracic setae black: 3 dc; 2 np; 2 ph; 1 + 1 pa; 1 sc; single row of ac; halter stem and knob white.

Legs: Coxae I yellow basally, mid and hind coxae and femora yellowish, remainder of legs brown; coxae with normal anteroapical setation; fore and hind legs unmodified and without MSSC; FII with two rows of black setae along mesoventral surface; TiII (Fig. 19) sinuous, with single long yellowish curved setae on lateral surface at basal 1/3 (MSSC), apical portion of lateral surface with pair of strong long black setae; mesal surface with patch of setae on basal 1/3, apical half with longer stiff downcurved setae (MSSC). IIt₁ about 2× length of IIt₂, without MSSC. Remaining leg segments unmodified and without MSSC.

Wing: Subhyaline, veins yellowish; posterior crossvein length less than 1/2 apical segment of CuA₁.

Abdomen: Brown; tergal vestiture black. Hypopygium brown with brown cerci, not dissected.

Female: Unknown.

Etymology. The specific epithet derives from Kaupo Gap, the general locality where the species was collected. It is treated as a noun in apposition.

Campsicnemus labiloides Evenhuis, n. sp.

(Figs. 7, 20)

Material Examined. *Holotype* ♂ (BPBMENT 0000017567) (in fluid) from HAWAIIAN ISLANDS: **Maui (East):** Waihoi rim, 20.736°N, 156.071°W, 4,400 ft [1,341 m], 25 May 2011, K.N. Magnacca, sweeping (BPBM). Holotype in BPBM.

Diagnosis. Similar to *Campsicnemus labilis* Hardy & Kohn, but can be separated from it by the holoptic eyes (eyes dichoptic in *C. labilis*) and the yellow pleura (black in *C. labilis*).

Description. Male (Fig. 7): Body length: 1.7 mm. Wing length: 2.2 mm.

Head: Face, front and clypeus brown; oc and vt black, about two-thirds length of

antennal arista; occiput, and vertex black; face constricted at middle, eyes holoptic for a length of 8 ommatidia; palpus small, brown; proboscis brown, extending below eye in lateral view; antenna with all segments yellowish; scape subcylindrical, length subequal to width; pedicel obconical, with ring of short spiky black setae subapically; postpedicel (both) broken off and missing.

Thorax: Mesonotum, scutellum and pleura (except dark brown laterotergite) subshining brown, paler on postalar callus; thoracic setae black: 3 dc; 2 np; 2 ph; 1 + 1 pa; 1 sc; 0 ac; halter stem yellowish brown, knob brown.

Legs: Fore and hind coxae yellow, mid coxa yellow anteriorly, brown posteriorly; femora yellow with brown apically, remainder of legs yellowish brown; coxae with normal anteroapical setation; fore and hind legs unmodified and without MSSC; FII with numerous minute stiff hairs on lateral and dorsal surfaces; without patches or row of long stiff setae ventrally; TiII (Fig. 20) long, straight, with 2 long black setae subbasally on lateral surface (MSSC), mesal surface with two strong setae: one at basal 2/5 and one at apical 1/3; single strong setae at apical 1/3 on anterior surface (MSSC), apex with 3 strong short black setae. III_t_1 slightly longer than III_t_2 , without MSSC. Remaining leg segments unmodified and without MSSC.

Wing: Subhyaline, veins brown; posterior crossvein length less than 1/2 apical segment of CuA_1 .

Abdomen: Brown, dark brown laterally; tergal vestiture black. Hypopygium dark brown with brown cerci, not dissected.

Female: Unknown.

Etymology. The specific epithet derives from Latin, by adding the suffix *-oides* (= like, similar) to *labilis* after eliding the final “-is”; referring to its similarity to *Campsicnemus labilis*.

Campsicnemus magnaccai Evenhuis, n. sp.

(Figs. 12, 21)

Material Examined. *Holotype* ♂ (BPBMENT 0000017561) (in fluid) from HAWAIIAN ISLANDS: **Maui (East):** Pi‘ina‘au Ridge east, 20.775°N, 156.215°W, 5,700–6,200 ft. [1,737–1,890 m], 2 Jun 2009, K.N. Magnacca, sweeping (BPBM). *Paratype:* 1♂, HAWAIIAN ISLANDS: **Maui (East):** Hanawī, [20.746582°N, 156.132529°W], [1,069 m], 24 May 2011, R. Peck, Malaise trap #1 (BPBM). Holotype and paratype in BPBM.

Diagnosis. Similar to *Campsicnemus diamphidius* Hardy & Kohn by the similar male mid tibial setation and both having dark brown admedian vittae on a yellow mesonotum, but can be separated from it by the yellow pleura (black in *C. diamphidius*), the male mid basitarsus being shorter than the second midtarsal segment and without subapical setae (longer and with subapical setae in *C. diamphidius*), and the male mid tibia without a mesal row of erect spines (present in *C. diamphidius*).

Description. Male: Body length: 2.7 mm. Wing length: 3.0 mm.

Head: Face, front and clypeus yellow, gray pollinose; oc and vt black, about two-thirds length of antennal arista; occiput, and vertex black with blue-gray highlights; postgena with long fine white hairs; face constricted at middle, eyes dichoptic for a width of 1 ommatidium; palpus small, yellowish brown; proboscis dark brown, extending below eye in lateral view; antenna with all segments yellowish brown; scape subcylindrical,

length $1.5\times$ width; pedicel obconical, with ring of short spiky black setae subapically; postpedicel subtriangular, length $1.5\times$ width, blunt apically; arista slightly longer than head height.

Thorax: Mesonotum (Fig. 12) yellow, with broad dark brown to black admedian vitæ; scutellum brown laterally with medial yellowish brown stripe; pleura yellow except anepimeron and laterotergite dark brown; thoracic setae black: 3 dc; 2 np; 2 ph; 1 pa; 1 sc; 2 ac; halter stem and knob white.

Legs: Fore coxa yellow, mid and hind coxae brown, hind coxae with yellow anteriorly; all femora yellowish; tibiae and tarsi yellowish brown; fore and hind legs unmodified and without MSSC; FII with rows of minute black setae along mesoventral surface (MSSC); TIII (Fig. 21) long, straight, slightly swollen at basal $1/3$, mesal surface with row of long stiff spiky setae, longest at apical $2/3$; lateral surface with long, thin downcurved setae admixed with long thin setae wavy apically (MSSC), apex with single thick short black seta. IIt_1 slightly shorter than IIt_2 , with short black thorn-like setae on apicolateral margin (MSSC). Remaining leg segments unmodified and without MSSC.

Wing: Smoky hyaline, veins brown.

Abdomen: Dark brown; tergal vestiture black. Hypopygium dark brown with brown cerci, not dissected.

Female: Unknown.

Etymology. The specific epithet honors Karl N. Magnacca, who collected the holotype, and has contributed greatly to our knowledge of weird and wonderful *Campsicnemus* in the Hawaiian Islands.

Campsicnemus nakula Evenhuis, n. sp.

(Figs. 22, 23)

Material Examined. *Holotype* ♂ (BPBMENT 0000017550) and 1♂ paratype (both in fluid) from HAWAIIAN ISLANDS: **Maui (East):** Kahikinui, 20.672081°N, 156.233721°W, 16 Nov 2011, R. Peck, Malaise #1 (all in BPBM). *Other paratypes:* 1♀, Kahikinui, 20°40'31.712"N, 156°14'16.711"W, 29 Sep 2011, R. Peck, Malaise #2 (BPBM); 1♀, Kahikinui, 20°40'31.712"N, 156°14'16.711"W, 17 Nov 2011, R. Peck, Malaise #2 (BPBM); 1♂, Kaupo Trail, 5,500 ft [1,676 m], 4 Aug 2007, K.N. Magnacca, 07-0751 (BPBM). Holotype and paratypes in BPBM.

Diagnosis. Similar to *Campsicnemus penicillatoides* Evenhuis from Kaua'i by both having a row of minute setae running diagonally between the subapical and apical patches on the male midtibia (cf. Figs. 22 and 23), but can be separated from it by differences in other setation and patterns of setal patches on the male midtibia including the following: long strong black seta on subapical third rather straight (this seta more distinctly contorted in *C. penicillatoides*), the second patch (subbasal) with long hairs basally and shorter hairs apically (this patch with all hairs subequal in length in *C. penicillatoides*); and the male mid femur without a row of setae ventrally (these setae present in *C. penicillatoides*).

Description. Male: Body length: 3.1–3.3 mm. Wing length: 3.5–3.6 mm.

Head: Face, front and clypeus brown; oc and vt black, about two-thirds length of antennal arista; occiput, and vertex black; face constricted at middle, eyes holoptic for a length of 3 ommatidia; palpus small, brown; proboscis yellowish brown, extending below eye in lateral view; antenna with scape and pedicel brown, postpedicel yellow; scape subcylindrical, length subequal to width; pedicel obconical, with ring of short spiky black



Figures 22–24. *Campsicnemus*, male midlegs. 22. *C. nakula*, n. sp., lateral view 23. *C. nakula*, n. sp., anterior view 24. *C. settitibia*, n. sp.

setae subapically; postpedicel subtriangular, length $2\times$ width, rounded apically; arista slightly longer than head height.

Thorax: Mesonotum and pleura (except dark brown anepimeron) dark brown, scutellum brownish; disc of mesonotum darker brown than surrounding mesonotum; upper pleura brown, lower pleura except propleuron yellow; thoracic setae black: 4 dc; 2 np; 2 ph; 1 + 1 pa; 1 sc; 7 ac; halter stem yellow, knob white.

Legs: Fore and hind coxae yellow, mid coxae brown, remainder of legs yellowish; coxae with normal anteroapical setation; fore femur with strong patch of long, thick stiff spines basally; hind legs unmodified and without MSSC; FII with patch of black hairs basoventrally; TiII (Figs. 22, 23) broad, slightly wider apically than basally, with 4 patches of stiff setae on lateral surface: basalmost patch located subbasally, with shorter setae extending to mesal surface; second patch at basal 3/5 with admixture of long and short setae, longest setae wavy apically, shorter setae extending mesally; third patch at apical 1/3 with long setae, wavy at tips, thin line of minute setae running diagonally between third patch and apical patch; apical patch with uniform short stiff setae (MSSC); single extremely long, thick seta just distad of third patch, sinuous in lateral view (Fig. 22); IIt₁ short, curved, with strong thick spur apically; IIt₂, inserted subapically on IIt₁ (MSSC). Remaining leg segments unmodified and without MSSC.

Wing: Pale smoky in radial cells, subhyaline elsewhere, veins brown.

Abdomen: Brown; tergal vestiture black. Hypopygium brown with yellowish brown cerci, not dissected.

Female: As in male except for lack of MSSC.

Etymology. The specific epithet derives from the Hawaiian *na* (= belonging to) + *kula* (= plains); referring to the general area of the type locality, which is large flat but sloping plain in the Kaupo Gap area.

Campsicnemus setitibia Evenhuis, n. sp.

(Fig. 24)

Material Examined. *Holotype* ♂ (BPBMENT 0000017546) (in fluid) from HAWAIIAN ISLANDS: **Maui (East):** Maunawainui, [20.690017°N, 156.129344°W], 5,260 ft [1,603 m], 25 May 2006, R. Peck, Malaise #1 (BPBM). *Paratypes:* 1♂, Maunawainui, [20.699767°N, 156.13154°W], 6,940 ft [1,115 m], 24 May 2006, R. Peck, Malaise #3 (BPBM); 1♂, Maunawainui, 6,260 ft [1,908 m], 19 Jul 2006, R. Peck, Malaise #3 (BPBM). Holotype and paratypes in BPBM.

Diagnosis. Similar to *Campsicnemus distinctus* Hardy & Kohn by the similar male mid tibial setation but can be separated from it by the thicker and sparser lateral setae (finer and more dense in *C. distinctus*) and the thicker mesal spine-like setae along the entire mesal length of the mid tibia (these setae finer and much more minute in *C. distinctus*).

Description. Male: Body length: 1.7 mm. Wing length: 1.9 mm.

Head: Face, front and clypeus yellow; oc and vt black, about two-thirds length of antennal arista; occiput, and vertex shiny gray-black; face constricted at middle, eyes dichoptic for a width of 2 ommatidia; palpus small, brown; proboscis brown, extending below eye in lateral view; antenna with all segments yellowish brown; scape subcylindrical, length subequal to width; pedicel obconical, with ring of short spiky black setae subapically; postpedicel subtriangular, length 1/2 width, acute apically; arista slightly longer than head height.

Thorax: Mesonotum and pleura dark brown, paler on postalar callus; mesonotum brown pollinose; scutellum brownish; thoracic setae black: 3 dc; 2 np; 2 ph; 1 + 1 pa; 1 sc; 0 ac; halter stem yellow, knob brown.

Legs: Fore and hind coxae yellow, mid coxae brown, remainder of legs yellowish; coxae with normal anteroapical setation; fore and hind legs unmodified and without MSSC; FII with row of 7–8 long stiff setae along mesoventral surface; TiII (Fig. 24) straight, thicker apically than basally, with row of short stiff spines setae mesally (MSSC), lateral surface with 10 long setae, curved apically; single long stiff seta at apical 1/3 directed upward (MSSC), apex with short black seta. Very thin II_{t1} about 2× length of II_{t2}, without MSSC. Remaining leg segments unmodified and without MSSC.

Wing: Subhyaline, veins yellowish; posterior crossvein length less than 1/3 apical segment of CuA₁.

Abdomen: Brown; tergal vestiture black. Hypopygium brown with brown cerci, not dissected.

Female: Unknown.

Etymology. The specific epithet derives from the Latin *seti-* (from *seta*, = hair) + *tibia*; referring to the setose mid tibia of the male.

***Campsicnemus steyskali* Evenhuis, n. sp.**

(Figs. 8, 10, 25)

Material Examined. *Holotype* ♂ (USNMMENT 01353604) (pinned) from HAWAIIAN ISLANDS: **Maui (East):** Waikamoi Flume Trail, 3 Jul 1968, G.C. Steyskal (USNM).

Diagnosis. Similar to *Campsicnemus patellifer* Grimshaw from O'ahu based on both species having a flag at the end of the arista, but can be separated from it by the 4–5 extremely long wavy setae originating at the apex of the male midtibia (these setae absent in *C. patellifer*) and the mid basitarsus without an apical spine (this spine present in *C. patellifer*).

Description. Male (Fig. 8): Body length: 1.8 mm. Wing length: 2.0 mm.

Head (eyes collapsed from air-drying): Face, front and clypeus brown; oc and vt black, about two-thirds length of antennal arista; occiput, and vertex black; face constricted at middle, eyes (assumed to be dichoptic as in *C. patellifer*); palpus small, brown; proboscis brown, extending below eye in lateral view; antenna with scape and pedicel, postpedicel brown; scape subcylindrical, length subequal to width; pedicel obconical, with ring of short spiky black setae subapically; postpedicel subtriangular, length 1.5× width, acutely pointed apically; arista (Fig. 10) slightly longer than head height with swollen apex (flag) (MSSC).

Thorax: Mesonotum and scutellum subshining dark brown, with dark blue highlights; pleura brown, gray pollinose; thoracic setae black: 3 dc; 2 np; 2 ph; 1 pa; 1 sc; 0 ac; halter stem and knob pale yellow.

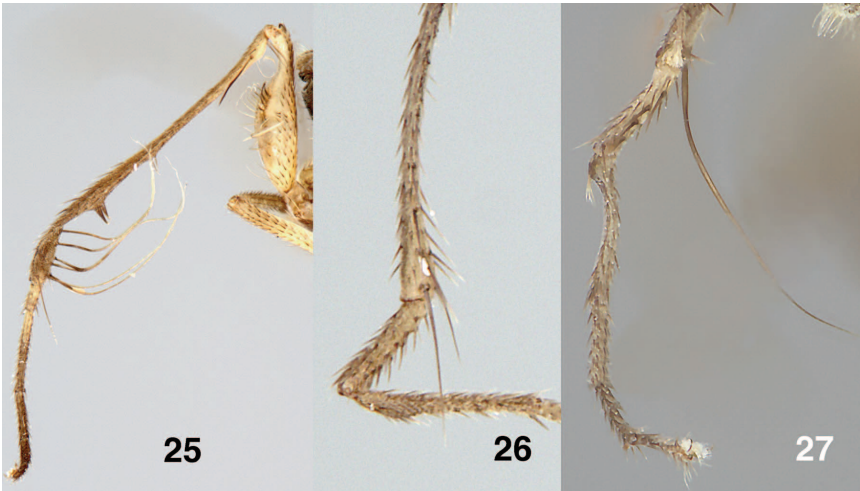
Legs: Fore coxa yellow, mid and hind coxae brownish, remainder of legs yellowish; coxae with normal anteroapical setation; fore and hind legs unmodified and without MSSC; FII swollen on basal 3/4, tapering acutely to thin apical 1/4, with small patch of 4 thick curved spines just beyond middle along lateral surface, row of 10 fine wavy hairs ventrally (MSSC); TiII (Fig. 25) extremely long, thin, straight, with small swollen area basally bearing 2 erect brown setae at base and single very long thick black seta apically (MSSC), mesal surface with 2 short, stiff brown setae at apical 2/5 and 2 thick acutely pointed conical thorn-like setae subapically, lateral surface with only a few hairs on apical 1/3 (MSSC). II_{t1} about equal to length of II_{t2}, swollen, with 6 very long, thick setae recurved backward to middle of TiII and single long thin brown setae at apex (MSSC). Remaining leg segments unmodified and without MSSC.

Wing: Subhyaline, veins yellowish brown; posterior crossvein length less than 1/2 apical segment of CuA₁.

Abdomen: Matte brown; tergal vestiture black. Hypopygium dark brown with brown cerci, not dissected.

Female: Unknown.

Etymology. The specific named for George C. Steyskal (1909–1996), who collected the type of this species, and for his numerous contributions to dipterology and nomenclature.



Figures 25–27. *Campsincnemus*, male midlegs. 25. *C. steyskali*, n. sp. 26. *C. uniseta* Hardy & Kohn. 27. *C. albitarsus* Hardy & Kohn.

***Campsincnemus uniseta* Hardy & Kohn, resurrected status**
(Fig. 26)

Campsincnemus uniseta Hardy & Kohn, 1964: 163.

Material examined. *Holotype* ♂ (BPBMENT 0000004153) and two ♂ *paratypes* from Hawaiian Islands: **Maui (East)**: Waikamoi, 4,000 ft. [1,220 m], Jul 1956, D.E. Hardy. Also, the *holotype* ♂ of *Campsincnemus albitarsus* Hardy & Kohn (BPBMENT 0000004085) from Hawaiian Islands: **Maui (East)**: Kula Pipeline above Waikamoi, 4,200 ft [1,280 m], Jul 1956, D.E. Hardy.

Evenhuis (2021) synonymized *Campsincnemus uniseta* under *C. albitarsus* Hardy & Kohn. Both species were described from Waikamoi and had a single long seta emanating from the apex of the male mid tibia and extending past the second tarsal segment. The synonymy was based on the illustrations in Hardy & Kohn (1964) and a cursory examination of the types of each species. The finding of the new species, *C. jubaris*, in this study that also appeared similar to *C. albitarsus* and *C. uniseta* in possessing a long seta in association with the mid tibia prompted me to re-examine both types again, whereupon I discovered that the illustration for *C. uniseta* in Hardy & Kohn (1964; fig. 39a) was not quite correct, and its moniker is also not correct. *Campsincnemus uniseta* has not one, but two strong setae emanating from the apex of the male mid tibia. The longest of these extends to just past the end of the basitarsus (the other is shorter and does not extend past the basitarsus) (Fig. 26); whereas the single long seta in *C. albitarsus* extends to almost the entire length of the tarsi (Fig. 27). In view of these findings, I herewith resurrect *C. uniseta* to separate species status. *Campsincnemus jubaris*, n. sp. differs from *C. uniseta* in having the long seta originating from the very base of the mid basitarsus (adjoining the tibial apex) whereas in *C. uniseta* it originates from the apex of the midtibia.

ACKNOWLEDGMENTS

Many thanks to the collectors who made this study possible. Karl Magnacca, Kari Roesch Goodman, and Robert Peck were the primary people responsible for procuring the little beasts from their fragile foothold in Mother Nature through various means. Some fieldwork for this study was funded in part by a grant from the National Science Foundation (DEB-0842348), who is thanked for their support. Dan Bickel kindly reviewed the manuscript, whose suggestions have helped improve it.

REFERENCES

- Evenhuis, N.L.** 2003. Review of the Hawaiian *Campsicnemus* species from Kaua'i (Diptera: Dolichopodidae), with key and descriptions of new species. *Bishop Museum Occasional Papers* **75**, 34 pp.
- Evenhuis, N.L.** 2007. Lectotype designations for Hawaiian *Campsicnemus* Haliday (Diptera: Dolichopodidae). *Bishop Museum Occasional Papers* **95**: 17–37.
- Evenhuis, N.L.** 2011. New species of *Campsicnemus* from East Maui, Hawaiian Islands (Diptera: Dolichopodidae). In: Evenhuis, N.L. & Eldredge, L.G. (eds.), Records of the Hawaii Biological Survey for 2009–2010. Part I: animals. *Bishop Museum Occasional Papers* **109**: 15–22.
- Evenhuis, N.L.** 2012a. New species of *Campsicnemus* (Diptera: Dolichopodidae) from the Ko'olau Mountains of O'ahu, Hawaiian Islands. In: Evenhuis, N.L. & Eldredge, L.G., eds., Records of the Hawaii Biological Survey for 2011. Part I: animals. *Bishop Museum Occasional Papers* **112**: 9–16.
- Evenhuis, N.L.** 2012b. Review of the *Campsicnemus fumipennis* group (Diptera: Dolichopodidae) in the Hawaiian Islands, with descriptions of new species and corrections of misidentifications. *Zootaxa* **3497**: 1–16.
- Evenhuis, N.L.** 2013a. New species of *Campsicnemus* Haliday (Diptera: Dolichopodidae) from the Kohala Mountains, Hawai'i Island. In: Evenhuis, N.L. & Eldredge, L.G. (eds.), Records of the Hawaii Biological Survey for 2012. *Bishop Museum Occasional Papers* **114**: 49–56.
- Evenhuis, N.L.** 2013b. The *Campsicnemus popeye* species group (Diptera: Dolichopodidae) from French Polynesia. *Zootaxa* **3694**: 271–279.
- Evenhuis, N.L.** 2015. New species of *Campsicnemus* Haliday (Diptera: Dolichopodidae) from Moloka'i, Hawaiian Islands In: Evenhuis, N.L. & Miller, S.E., eds., Records of the Hawaii Biological Survey for 2014. Part I: Articles. *Bishop Museum Occasional Papers* **116**: 3–17.
- Evenhuis, N.L.** 2016. Simply *ridiculus*: new species of the *Campsicnemus ridiculus* group from Hawai'i and the Marquesas (Diptera: Dolichopodidae). In: Evenhuis, N.L., ed., Records of the Hawaii Biological Survey for 2015. *Bishop Museum Occasional Papers* **118**: 33–38.
- Evenhuis, N.L.** 2018. A new species of flightless *Campsicnemus* (Diptera: Dolichopodidae) from the Wai'anae Range, O'ahu, Hawaiian Islands. In: Evenhuis, N.L. ed., Records of the Hawaii Biological Survey for 2017. *Bishop Museum Occasional Papers* **123**: 25–30.
- Evenhuis, N.L.** 2019. A new species of *Campsicnemus* (Diptera; Dolichopodidae: Sympterninae) from Kaua'i, Hawaiian Islands, with remarkable leg ornamentation. In : Evenhuis, N.L., ed., Records of the Hawaii Biological Survey for 2018. *Bishop Museum Occasional Papers* **126**: 19–22.

-
- Evenhuis, N.L.** 2021. New synonymies in Hawaiian Diptera (Insecta). In: Evenhuis, N.L. (ed.), Records of the Hawaii Biological Survey for 2020. *Bishop Museum Occasional Papers* **137**: 21–23.
- Evenhuis, N.L.** 2023. A curious new species of Hawaiian *Campsicnemus* with modified hind legs (Diptera: Dolichopodidae). In: Evenhuis, N.L. (ed.), Records of the Hawaii Biological Survey for 2022. *Bishop Museum Occasional Papers* **148**: 169–173.
- Evenhuis, N.L.** 2024. The *Campsicnemus macula* Parent complex (Diptera: Dolichopodidae): examples of volcanoes acting as islands? In: Evenhuis, N.L. (ed.), Records of the Hawaii Biological Survey for 2024. *Bishop Museum Occasional Papers* **156**: 155–169.
- Evenhuis, N.L.** 2025. Three new species of *Campsicnemus* from Kaua'i, Hawaiian Islands (Diptera: Dolichopodidae). In: Evenhuis, N.L., (ed.), Records of the Hawaii Biological Survey for 2025. *Bishop Museum Occasional Papers* **163**: 229–235.
- Evenhuis, N.L. & O'Grady, P.M.** 2010. Morphological and molecular evidence supports the synonymy of *Emperoptera* Grimshaw with *Campsicnemus* Haliday (Diptera: Dolichopodidae). In: Evenhuis, N.L. & Eldredge, L.G. (eds.), Records of the Hawaii Biological Survey for 2008. Part II: animals. *Bishop Museum Occasional Papers* **108**: 35–44.
- Goodman, K.R., Evenhuis, N.L., Bartošová-Sojtková, P. & O'Grady, P.M.** 2014. Diversification in Hawaiian long-legged flies (Diptera: Dolichopodidae: *Campsicnemus*): biogeographic isolation and ecological adaptation. *Molecular Phylogenetics and Evolution* **81**: 232–241.
- Haliday, A.H.** 1832. The characters of two new dipterous genera, with indications of some generic subdivisions and several undescribed species of Dolichopidae. *Zoological Journal* **5**: 350–367.
- Hardy, D.E. & Kohn, M.A.** 1964. Dolichopodidae. *Insects of Hawaii* **11**: 1–256.
- International Commission on Zoological Nomenclature** (1958) Opinion 531. Validation under the Plenary Powers of the generic name *Campsicnemus* Haliday, 1851 (Class Insecta, Order Diptera). *Opinions and Declarations of the International Commission on Zoological Nomenclature* **19**: 349–360.
- Kertész, K.** 1909. *Catalogus dipterorum hucusque descriptorum*. Volumen VI. Empididae, Dolichopodidae, Musidoridae. Museum Nationale Hungaricum, Budapestini [= Budapest]. 362 pp.
- Macquart, P.J.M.** 1835. *Histoire naturelle des insectes*. Diptères. Tome deuxième. Ouvrage accompagné de planches. Roret, Paris. 703 pp.
- Walker, F.** 1851. *Insecta Britannica, Diptera*. Volume 1. Reeve & Benham, London. vi + 314 pp.