

## A NEW SPECIES OF DOLICHOPODID FROM THE MARQUESAS \*

By

C. G. LAMB

UNIVERSITY OF CAMBRIDGE

Among the Dolichopodidae collected by the Pacific Entomological Survey in the Marquesas Islands are several new species, one of which is described here. The description of the others awaits the finding of additional material.

The author wishes to express his thanks to the Rev. O. Parent, who was good enough to look over doubtful species and give him much good advice, and also to J. F. Marshall, M.A., F.E.S., Director of the British Mosquito Control Institute, Hayling Island, for photographs.

### Genus CHRYSOTUS Meigen

#### **Chrysotus denticornis**, new species (fig. 51; pl. 6).

Length, about 2.25 mm. Head: frons and vertex brilliant metallic dark green; the face similar below the antennae, but the pointed lower face densely dusted with dark brown pollen. Eyes touching for a long space, the frontal facets a little larger than the others; palpi black; antennae (fig. 51) entirely black, the third joint rounded and very hairy, with apical tooth, arista black, but pale on basal joint, inserted at base of tooth, densely pubescent. Ocular bristles very stout and long, verticals also long, all black, as is the post-ocular row of which the upper members are unusually stout; back of head black, post-oral bristles brownish. Thorax: dorsum dark shining green, five very stout dorsocentrals, including the more widely separated prescutellars; acrostichals well developed, about one-third as long and stout as the dorsocentrals. Scutellum exactly concolorous with the dorsum, the side bristles unusually long and stout; all the bristles black. Pleura black, slightly shagreened. Halteres yellow. Wings as in plate 6.



FIGURE 51. Antenna of *Chrysotus denticornis*, new species.

Alulae brown with four or five stout black fringing bristles. Legs with no special characters. Front coxa black with black bristles, trochanter dark orange; femur shining black, a little paler at tip; tibia dark orange with an anterior bristle basally; tarsus also dark orange, more suffused distally. Mid legs colored like front; tibia with a row of anterior bristles, the second and fourth being stouter, two superior bristles on middle third, the usual crowning bristles. Hind legs colored like front; femur stout and slightly grooved in front, a double row of superior bristles, the basal pair side by side, the last pair (about the middle) and the intermediate pair somewhat staggered; the usual crown

\* Pacific Entomological Survey Publication I, article 24. Issued December 21, 1932.

of bristles. Abdomen, shining black, bristly, the marginal bristles being unusually stout on the sides of the segments. Hypopygium small and retracted.

Female like the male, stouter, the third antennal joint smaller, and the tooth inconspicuous.

Fatuhiva: Omoa [Oomoa] Valley, Punahitahi, altitude 650 feet, August 18, 1930, type male, 1 female; Tevaitapu Valley, altitude 650 feet, August 23, 1930, 3 females, including type; Omoa [Oomoa] Valley, Otomahe, altitude 280 feet, August 20, 1930, sweeping over *Paspalum conjugatum*, 2 males; Omoa [Oomoa] Valley, near sea level, August 21, 1930, 1 male, 1 female; Hanavave Valley, altitude 50 feet, September 8, 1930, sweeping over *Paspalum conjugatum*, 53 males, 14 females; Ahuava, altitude 1,800 feet, August 19, 1930, sweeping over *Paspalum conjugatum*, 1 male, 2 females; Teavaipuhiau, altitude 2,150 feet, August 25, 1930, sweeping over *Paspalum conjugatum*, 2 females; Omoa [Oomoa] Valley, Teavaione, altitude 1,700 feet, August 29, 1930, 2 females; Hanavave Valley, Teaotu, altitude 1,000 feet, September 9, 1930, on wet rock by stream, 1 female; Hanavave Valley, Ihiota, altitude 600 feet, September 10, 1930, 11 females, sweeping herbage, 2 females; LeBronnec.

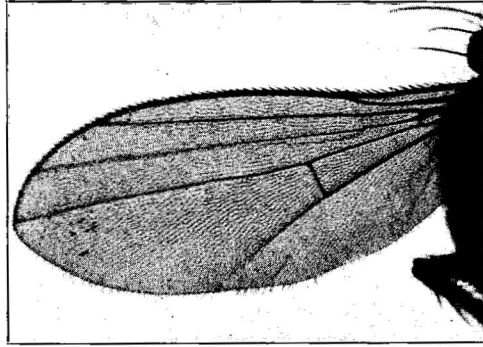
Hivaoa: Atuona Valley, altitude 325 feet, July 6, 1929, 1 male, 1 female; Teava Uhia i te Kohu, altitude 2,100 feet, February 15, 1930, sweeping over *Paspalum conjugatum*, 2 males, 7 females; Mount Temetiu, northeast slope, altitude 3,200 feet, September 13, 1929, by miscellaneous sweeping, 1 male, 2 females; Mount Temetiu, northeast slope, altitude 2,800 feet, August 3, 1929, 1 male, 1 female; Mount Temetiu, northeast slope, altitude 2,500 feet, July 24, 1929, by miscellaneous sweeping, 1 female; Mumford and Adamson.

Tahuata: Hanamiai Valley, altitude 1,000 feet, May 28, 1930, 2 females; Tehue Valley, altitude 800 feet, May 27, 1928, sweeping over grasses, 3 females; Hanahevane Valley, sea level, July 16, 1930, sweeping herbage, 1 female; LeBronnec.

Uapou: Hakahetau Valley, altitude 1,000 to 2,000 feet, January 29, 1930, 5 males, 5 females; Hakahetau Valley, altitude 1,000 to 2,000 feet, January 22, 1930, 1 male, R. R. Whitten. Hakahetau Valley, altitude 1,200 feet, December 6, 1929, 1 male, A. M. Adamson.

This species was also taken by the Pacific Entomological Survey in Tahiti.<sup>75</sup>

<sup>75</sup> Lamb, C. G., Dolichopodids from the Society Islands, manuscript, Pacific Entomological Survey, Bernice P. Bishop Museum.



WING OF CHRYSOTUS DENTICORNIS, NEW SPECIES.