

# DOLICHOPODIDS FROM THE SOCIETY ISLANDS\*

By

C. G. LAMB

UNIVERSITY OF CAMBRIDGE

## INTRODUCTION

In a previous paper<sup>1</sup> the writer described *Chrysotus denticornis* new species, from the Marquesas and Society Islands. This second report on collections made in the South Pacific islands by the Pacific Entomological Survey deals with the remaining species from the Society Islands. Unfortunately many of the species are represented by single specimens only.

The author is indebted to the Rev. O. Parent for advice about doubtful species, and to J. F. Marshall, Director of the British Mosquito Control Institute, Hayling Island, for photographs.

## CHRYSOMATINAE

### Genus CHRYSOSOMA Guérin

1. *Chrysosoma pallidicorne* Grimshaw.

Tahiti: Fautaua Valley, altitude 50 feet, 1 mile from sea, November 6, 1928, 1 male, A. M. Adamson.

2. *Chrysosoma* species.

A mutilated male of the *patellifer* section.

Tahiti: Papenoo Valley, altitude 500 feet, 6 miles from sea, October 23, 1928, A. M. Adamson.

3. *Chrysosoma* species.

An indeterminable female of another species.

Tahiti: Papenoo, altitude 500 feet, 6 miles from sea, October 25, 1928, A. M. Adamson.

### Genus SCIAPUS Zeller

4. *Sciapus pachygyna* Macquart.

Six specimens of this typical Pacific species.

Tahiti: Paea, August 29, 1928, on *Hibiscus tiliaceus*, 1 specimen; Tuauru

<sup>1</sup>Lamb, C. G., A new species of Dolichopodid from the Marquesas: B. P. Bishop Mus., Bull. 98, pp. 233-234, 1932.

\* Pacific Entomological Survey, Publication 6, article 13. Issued May 22, 1933.

River, altitude 50 feet, 1 mile from sea, September 5, 1928, 1 specimen; Fautau Valley, altitude 50 feet, 1 mile from sea, September 6, 1928, 4 specimens; A. M. Adamson.

#### DIAPHORINAE

##### Genus CHRYSOTUS Meigen

##### 5. *Chrysotus denticornis* Lamb.

Tahiti: Papenoo Valley, altitude 500 and 1000 feet, 6 and 4 miles respectively from sea, October 23 and October 26, 1928, 6 males and 3 females; Papeari, altitude 600 feet, November 9, 1928, 2 males, 1 female, and altitude 50 feet, 1 male; Faraua Valley, Hitiaa, altitude 500 feet, 5 miles from sea, November 17, 1928, 1 male, 2 females (1 at light); Fautau Valley, altitude 50 feet, 1 mile from sea, and altitude 1500 feet, November 6 and 11, 1928, 2 males; Hitiaa, altitude 1000 feet, 4 miles from sea, November 20, 1 male; A. M. Adamson. Vallée de la Reine, altitude 460 feet, 3 miles from sea, December 17, 1928, 1 male, 2 females (1 over river), Mumford and Adamson.

##### 6. *Chrysotus* species.

A few imperfect specimens of a species near *degener* Frey.

Tahiti: Papenoo Valley, altitude 1000 feet, 6 miles from sea, October 26, 1928, 4 specimens (2 sweeping over *Andropogon halepensis*); altitude 500 feet, October 23, 1928, 6 miles from sea, 3 specimens; Papeari, altitude 600 feet, November 9, 1928, 1 specimen; Faraura Valley, Hitiaa, altitude 500 feet, 5 miles from sea, November 17, 1928, at light, 2 specimens; A. M. Adamson.

##### 7. *Chrysotus* species.

A single male of a species near *excretus* Becker.

Tahiti: Faraura Valley, Hitiaa, altitude 500 feet, November 17, 1928.

##### Genus ACRODOCERA Becker

There are a few male specimens of an interesting form which appear to be referable to this Chilean genus.<sup>2</sup> The prominent character of the genus is the remarkably long third antennal joint which has a rounded basal part with an elongate almost cylindrical distal part, the arista being quite terminal. The present species has a less striking antennal structure, but it appears to fall within the limits of Becker's genus; the Rev. O. Parent agrees in this view.

<sup>2</sup> Becker, Th., Dipterologische Studien: Abh. Zool. Bot. Ges. Wien, Band 13, Heft 1, p. 207, 1921.

**8. *Acrodocera insularis*, new species (pl. 1, A-C).**

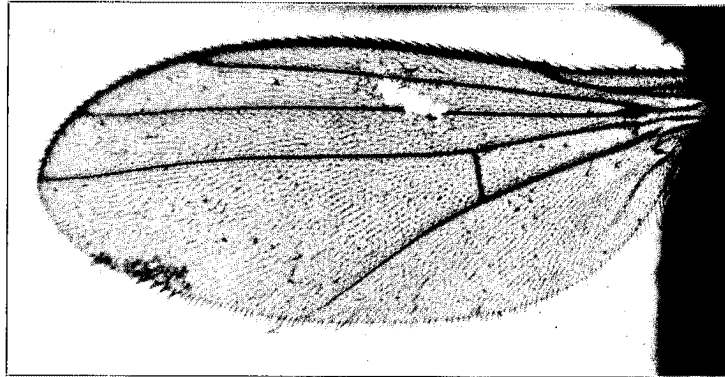
Head: vertex all dark aeneous green, rest of head, including antennae and bristles, black. Eyes touching for a long space. The antennae are strongly haired as is the terminal arista (pl. 1, B-C). Palpi black, somewhat pollinated.

Thorax: dorsum dark aeneous green: 5 dorso-central pairs including the pre-scutelars; the acrostichals short and very regular, pleura black. Halteres orange: the alular fringes consist of a few stout black bristles. Wings as in pl. 1, A. All the legs with black coxae and femora, the rest being suffused orange. No outstanding bristles, but two small anterior ones on the middle tibia, and one posterior one on the hind tibia.

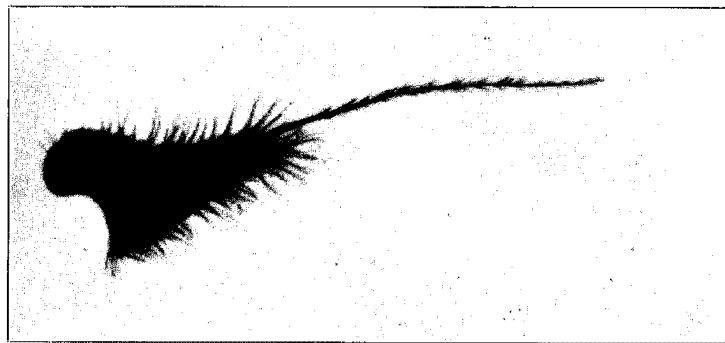
Abdomen black with fairly prominent genitalia.

Size, 1¾ mm.

Tahiti: Papenoo Valley, altitude 500 feet, 6 miles from sea, October 23 and 25, 1928, type and 3 paratypes; Fautaua Valley, altitude 1500 feet, September 11, 1928, 1 male; Hitiaa, altitude 1000 feet, 4 miles from sea, November 20, 1928, 1 male; A. M. Adamson.



*A*



*B*



*C*

ACRODOCERA INSULARIS, NEW SPECIES: *A*, WING; *B*, DETAIL OF THIRD SEGMENT OF ANTENNA; *C*, GENERAL VIEW OF ANTENNA.