

NEW SCENOPINIDAE (Diptera) FROM THE PACIFIC AREA¹

By Lewis P. Kelsey²

I was privileged to examine material, housed in the collection of the Bishop Museum³, from Thailand and several Pacific islands. Included in this material are 5 new species and a previously undescribed male of a 6th species, all of which are described in this paper. The presence of a new *Metatrichia* from Thailand, the first from the Eurasian continent, completes the continental distribution of this genus and a new species from New Guinea adds still further to its overall distribution.

The addition of a new species of *Seguyella* further confirms the validity of this genus.

On the accompanying figures the scale marks equal 1/2 mm; the shorter applies to the wing and head, the longer to the terminalia.

Scenopinus fijianus (Kröber) Fig. 1.

Omphrale fijianus Krober, 1939: 399.

The description of the previously undescribed ♂, from the type locality, follow:

♂. Head black-brown; eyes red-brown above, black-brown below, extending to back of head; frons narrow, triangular, subshining; ocellar tubercle prominent, black-brown; ocelli red-brown; mouthparts black-brown, filling oral cavity; palpi black-brown, slender, 2/3 length of oral cavity which is bordered by a narrow band of silvery pubescence; gena below eye small; antennae black-brown, 2nd segment with an orange-brown distal membrane, 3rd segment 2× as long as broad, only slightly tapering, truncate at tip, covered with short golden hairs.

Thorax with dorsum black, a patch of silvery pubescence above the humeral callus; humeral and supra-alar calli red-brown; pleuron black; wings hyaline, milky; veins orange-brown; halter stem black-brown, knob creamy with red-brown base; legs through femora dark red-brown, tibiae dark orange-brown; tarsi light orange-brown.

Abdomen black-brown; white bands on segments 4 and 5, separated by a sclerotized band as wide as anterior white band, 2nd band narrower. Terminalia black-brown, bilobed; see figure for details of concealed terminalia.

Length ♂ body: 3 mm; wing 2 mm.

♀. See Kelsey, 1969: fig. 88.

1. Miscellaneous Paper No. 612 with the approval of the Director of the Delaware Agricultural Experiment Station. Publication No. 395 of the Department of Entomology and Applied Ecology.
2. Assistant Professor, Department of Entomology and Applied Ecology, University of Delaware, Newark, Delaware 19711.
3. Specimens were collected during fieldwork supported by grants to Bishop Museum from the National Institutes of Health (AI-01723).

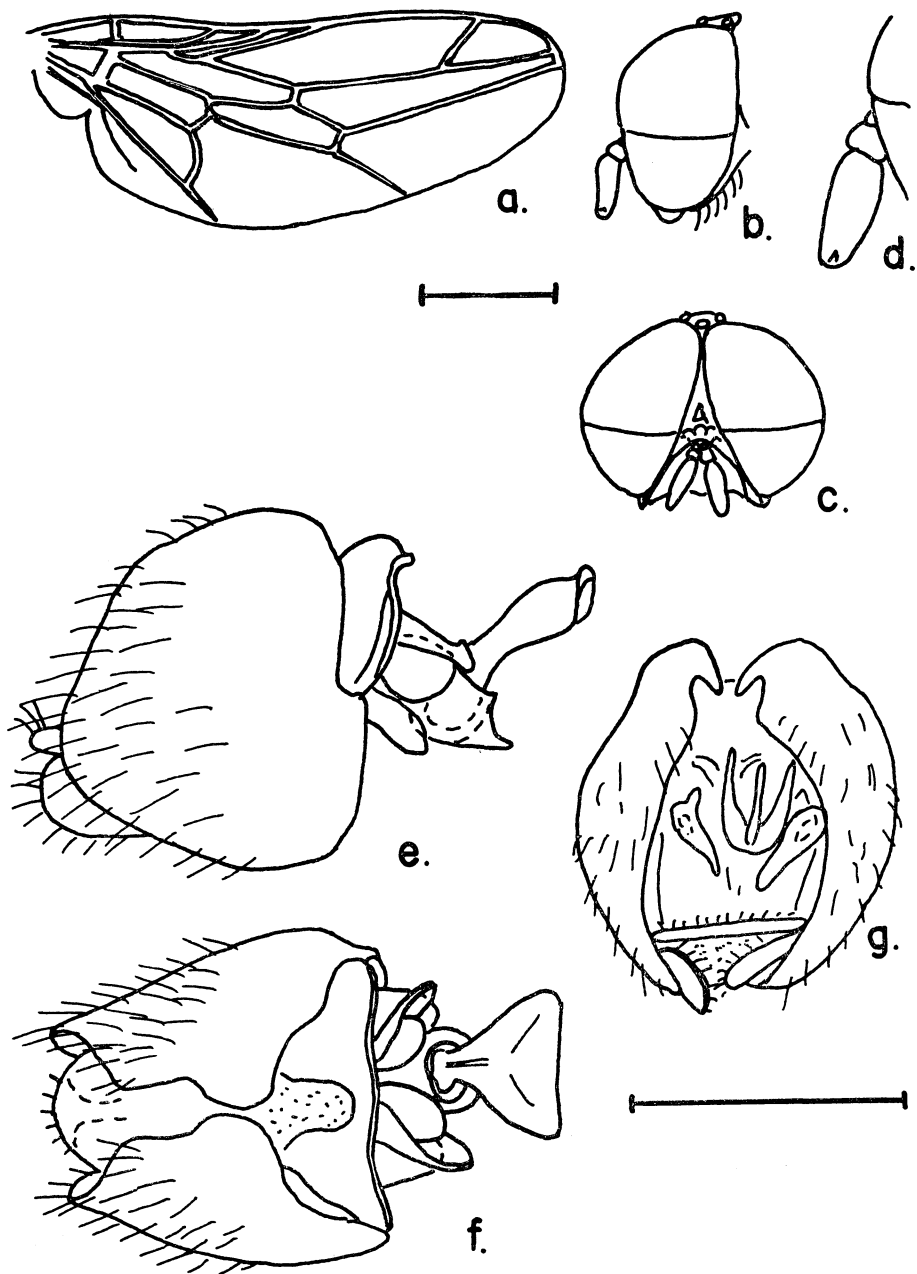


Fig. 1. *Scenopinus fijianus* (Kröber), ♂: a, wing; b, c, lateral and frontal aspects of head; d, enlarged detail of antenna; e, f, g, lateral, ventral (physically dorsal) and posterior aspects of terminalia.

Type locality: Suva, Fiji Is., 8.III.1928, H. W. Simonds. Type ♀ deposited in British Museum (Nat. Hist.).

SPECIMEN EXAMINED. ♂, Viti, Suva, Fiji Is., XI. 1957, N.L.H. Krauss. In Bishop Museum.

Scenopinus maai Kelsey, new species Fig. 2.

This new species belongs to the *Albicinctus*-Group and in Kelsey's 1969 keys to the Pacific and Oriental species, it would not fit any of the species due to halter and antennal colors.

♀. Head black; eyes black-brown, occupying most of the head from side view, leaving only indication of a postocular ridge; frons rugose, narrow, elongate, equal in width to ocellar tubercle, lower frons slightly swollen, cleft on midline by a shallow groove ending in a pit at lower 1/3 of frons; ocellar tubercle black, rugose, set off from frons; ocelli orange-red; mouthparts black-brown, filling oral cavity which is bordered by silvery pubescence; palpi black-brown, nearly as long as mouth-parts; antennae red-brown, 2nd segment subshining, 3rd segment velvety, pear-shaped, 2/3 as broad at base as long.

Thorax with dorsum black, rugose, a silvery patch of pile above humeral callus and scattered silvery hairs over surface; humeral and supra-alar calli orange; pleuron black brown, subshining; wings brownish hyaline; veins brown; halter stem brown, knob velvety red-brown with a lighter ventral surface; legs dark red-brown with tarsi orange-brown, darker at tips.

Abdomen black-brown, broad, robust; see figure for conformation of 8th sternum and details of 8th sternum and bursa.

Length ♀ body 3.6-4.0 mm; wing 2.7-3.0 mm.

♂. Unknown.

Holotype ♀ (BISHOP 7486), Chang Mai (Doi Suthep, 1278 m), NW Thailand, 29.III-4.V.1958, T. C. Maa (#164).

Paratypes: 2♀♀, same data as type (#164, 172) deposited in Bishop Museum.

Scenopinus thailandicus Kelsey, new species Fig. 3.

This new species belongs in the *Albicinctus*-Group and in Kelsey's (1969) keys to the Pacific and Oriental species, it would not fit any of the species due to halter and antennal colors.

♀. Head red-brown; eyes black-brown extending nearly to back of the head, leaving only an indication of a postocular ridge; frons subshining, only as wide as ocellar tubercle, parallel sided, with a shallow median depression on lower 1/3; ocellar tubercle black-brown, distinct, set off; ocelli orange; mouthparts black-brown, well developed, filling oral cavity; palpi black-brown, broad, subequal to mouthparts; antennae with 1st segment brown, short; 2nd orange-brown, larger; 3rd orange-brown with a dark tip, elongate oval, not 1/2 as wide as long.

Thorax with dorsum dark red-brown, subshining, rugose, with a scattering of short white hairs; humeral and supra-alar calli red-brown; pleuron red-brown; wings hyaline with brown microtrichia giving a brown cast, veins brown; halter stem brown; knob red-brown, ventral surface light brown; legs with coxae through tibiae red-brown, tarsi brownish yellow.

Abdomen red-brown, elongate, pointed dull dorsally; see figure for details of 8th sternum and 9th sternum and bursa.

Length ♀ body 3.6 mm; wing 2.4 mm.

♂. Unknown.

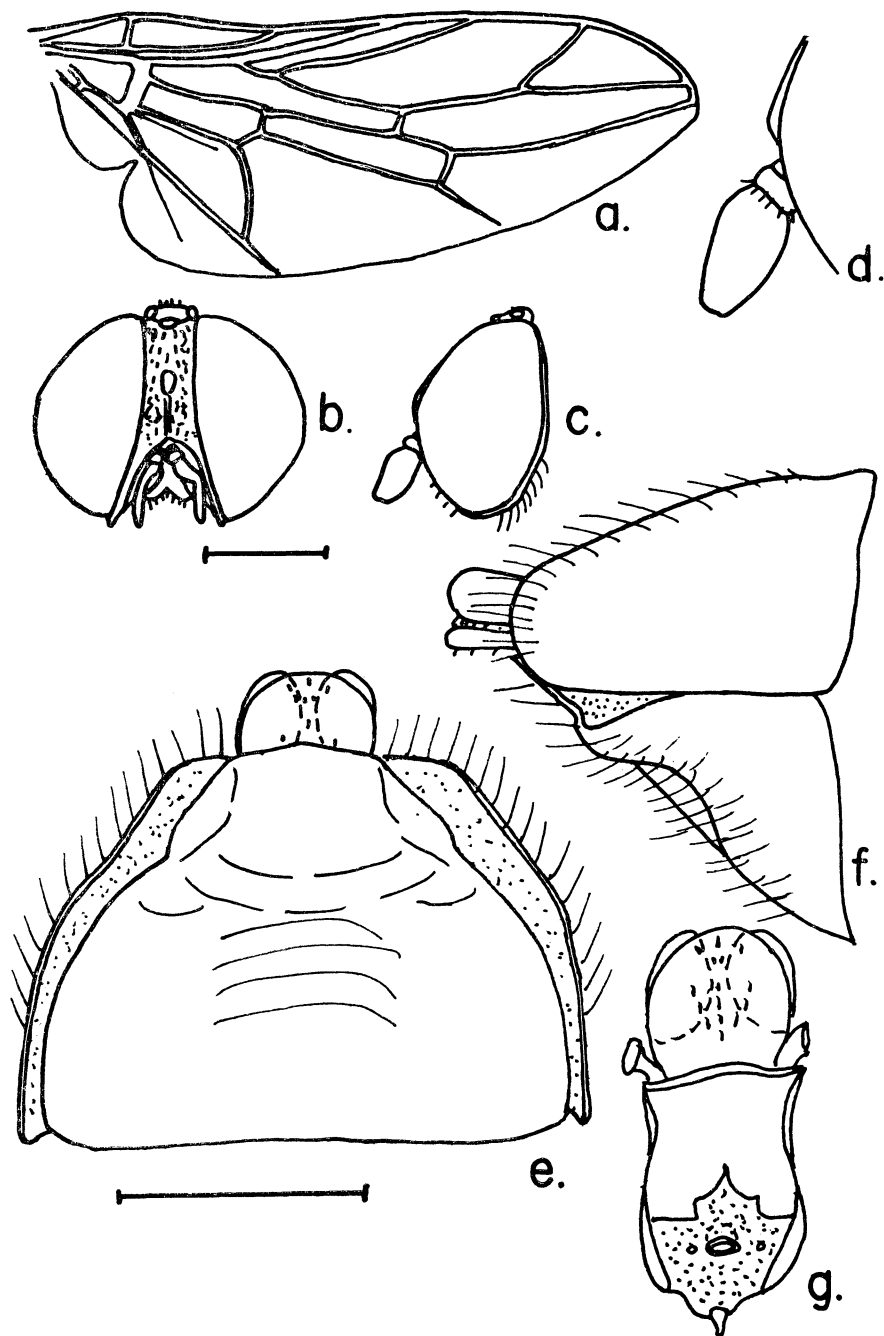


Fig. 2. *Scenopinus maaï* new species, ♀: a, wing; b, c, frontal and lateral aspects of head; d, enlarged detail of antenna; e, ventral aspect of 8th and 9th sternites; f, lateral aspect of 8th and 9th segments; g, 9th sternum and bursa.

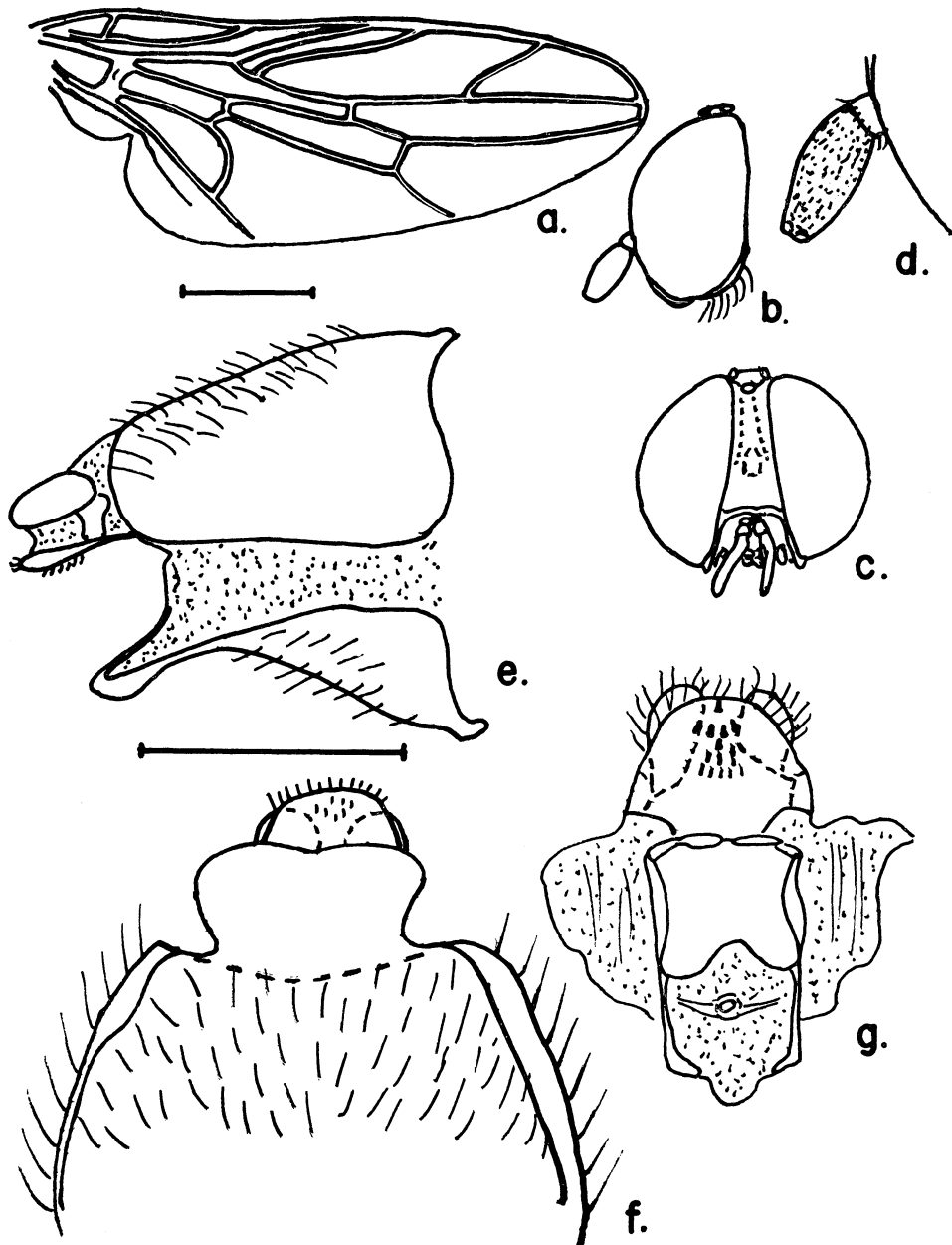


Fig. 3. *Scenopinus thailandicus* new species, ♀: a, wing; b, c, lateral and frontal aspects of head; d, enlarged detail of antenna; e, lateral aspect of 8th and 9th sternites; f, ventral aspect of 8th and 9th segments; g, 9th sternum and bursa.

Holotype ♀ (BISHOP 7487), Chang Mai (Doi Suthep, 1278 m), NW Thailand, 29.III-4. VI.1958, T. C. Maa (#243).

Paratypes: 3♀♀ (#172, 195, 305), same data as type, Bishop Museum and Bangkok.

Metatrachia papuana Kelsey, new species Fig. 4.

♀. Head black; eyes black with a reddish sheen, extending to back of head except in front of short, narrow postocular ridge next to ocellar tubercle; frons narrow, only as wide as ocellar tubercle widening over antennal bases, granular, slightly swollen around base of antennae, a subshining elongate depression above antennae and a shining area anterior to median ocellus; ocellar tubercle black; ocelli orange; mouthparts black-brown, filling oral cavity; palpi black, granular, large, extending to base of antennae; narrow genae below eyes; antennae with 1st segment black-brown, remainder lost.

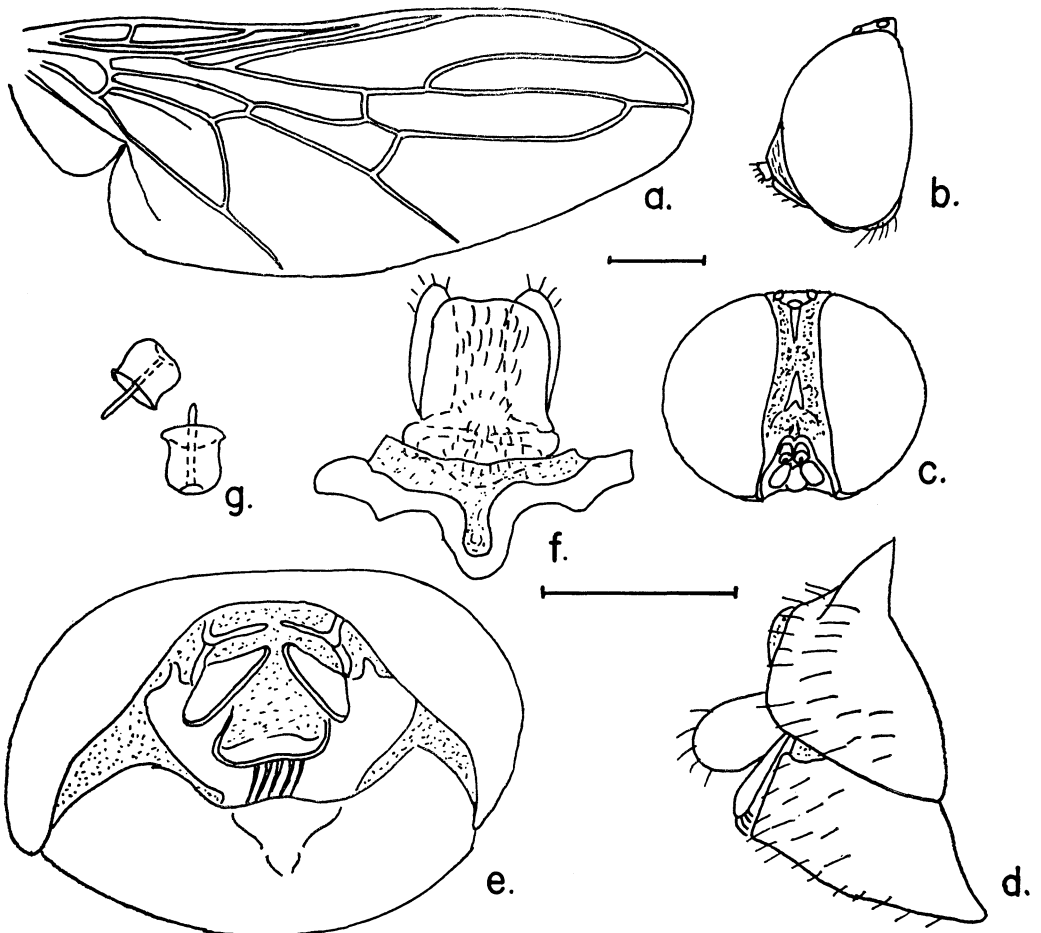


Fig. 4. *Metatrachia papuana* new species, ♀ : a, wing; b, c, lateral and frontal aspects of head, 3rd antennal segments missing; d, lateral aspect of 8th and 9th segments; e, posterior aspect of tip of abdomen; f, 9th sternum and bursa; g, accessory organs (spermathecae?).

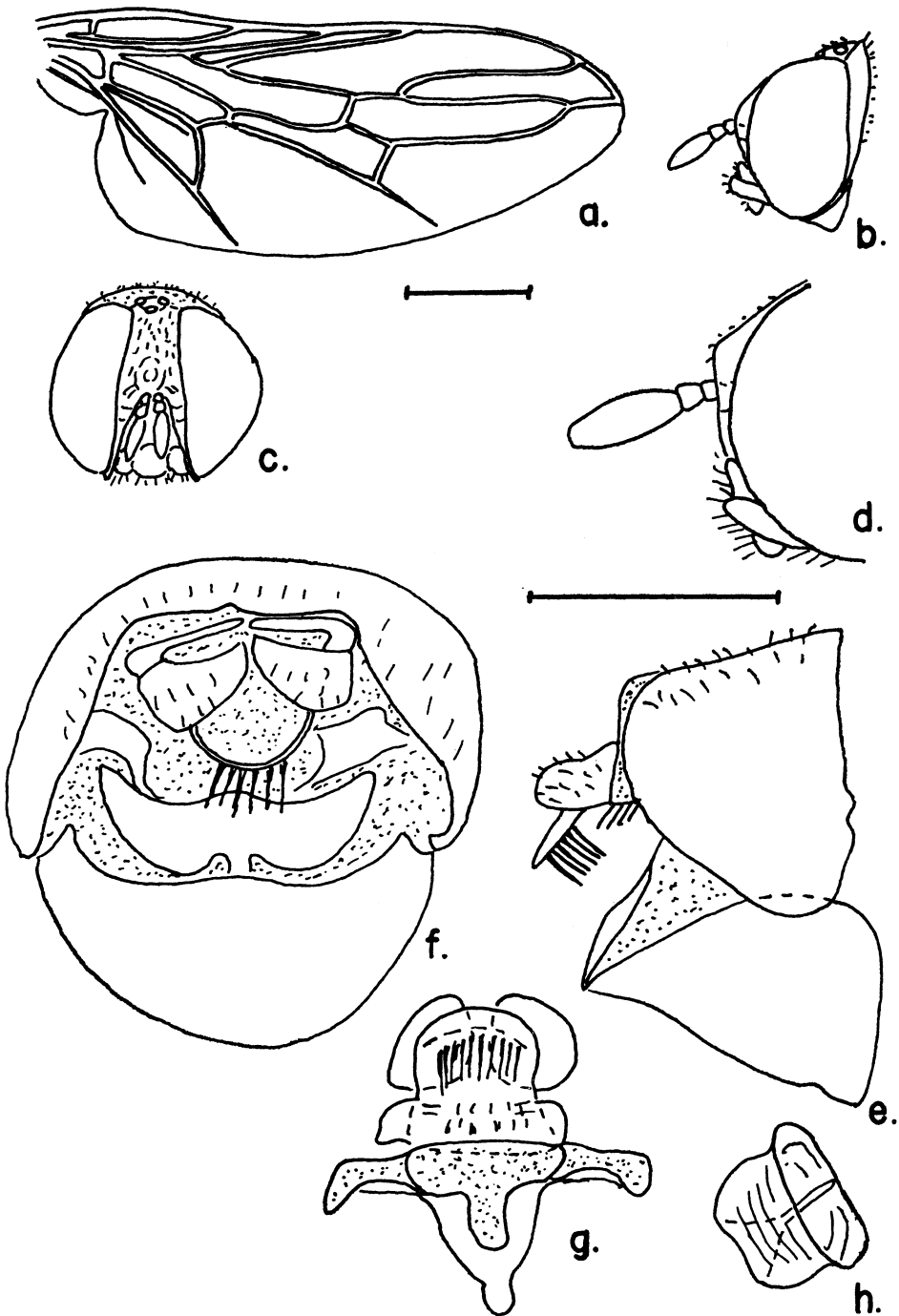


Fig. 5. *Metatrichia thailandica* new species, ♀: a, wing; b, c, lateral and frontal aspects of head; d, enlarged detail of antennae; e, lateral aspect of 8th and 9th segment; f, posterior aspect of tip of abdomen; g, 9th sternum and bursa; h, accessory organs (spermatheca?).

Thorax with dorsum black, nubby-granular, with blue-violet metallic sheen, no hair on thorax; tips of humeral and supra-alar calli red-brown; pleuron black except below wing orange-brown; wing brown, veins black-brown; halter stem red-brown, knob dark red-brown with ventral margin lighter; legs all black.

Abdomen black, broad, subshining; see figure for details of 8th and 9th segments, bursa and accessory glands.

Length ♀ body 4.2 mm; wing 3.7 mm.

♂. Unknown.

Holotype ♀ (BISHOP 7488), Wau, New Guinea (NE), 1200 m, 14.XI.1964, P. S. Shanahan, Malaise trap.

***Metatrichia thailandica* Kelsey, new species** Fig. 5.

♀. Head dark red-brown; eyes brown, with a narrow but distinct postocular ridge; frons moderately broad, rugose, swollen above the antennal bases, ventrolateral portion bordering the oral cavity white, a broad depression on lower 1/3, covered with a few scattered white hairs; ocellar tubercle dark red-brown; ocelli orange-brown; mouthparts red-brown, well developed, extending beyond lower face; palpi brown, exceeding length of oral cavity but not attaining bases of antennae; antennae orange-brown, 3rd segment turning to black-brown at tip, elongate oval; see figure.

Thorax with dorsum black, rugose, with scattered white hairs; humeral and supra-alar calli red-brown; pleural areas dark red-brown with some scattered white hair; wings brown, veins brown; halter stem brown, knob red-brown with posteroventral portion creamy; legs dark dark red-brown with basal tarsal segments lighter.

Abdomen red-brown, broad, with red-brown hairs; see figures for details of 8th segment, 9th sternum, bursa and accessory glands.

Length ♀ body 3 mm; wing 2.4 mm.

♂. Unknown.

Holotype ♀ (BISHOP 7489), Chang Mai (Doi Suthep, 1278 m), NW Thailand, 29.III-4.V. 1958, T. C. Maa (#253).

***Seguyella maai* Kelsey, new species** Fig. 6.

The discovery of this new species of *Seguyella* extends the eastward distribution of this genus considerably from South Africa to South India and now Thailand.

♀. Head red-brown; eyes black-brown; frons broad, shining, covered with scattered hairs pointed to ocellar tubercle, 1/2 again as wide as ocellar tubercle above antennae, widening to 3× the width of the ocellar tubercle at top of head, extending as a postocular ridge behind eyes to midpoint; genae below eyes extensive; mouthparts red-brown, well developed, filling oral cavity; palpi red-brown, short and only 1/3 length of mouthparts; antennae black-brown, 1st 2 segments short, 3rd pear-shaped, cleft at tip; see figure.

Thorax with dorsum red-brown, subshining, covered with a thin layer of golden pollen with each fleck distinctly separate; humeral and supra-alar calli yellow brown; pleuron red-brown, with scattered patches of golden pollen; wings brownish hyaline with an even covering of microtrichia, veins brown; halter stem brown, knob brown with flecks of golden pollen; legs uniformly light red-brown.

Abdomen red-brown with extensive areas of creamy membrane between segments; 8th sternum dark red-brown, 9th segment pendulous; see figure for details.

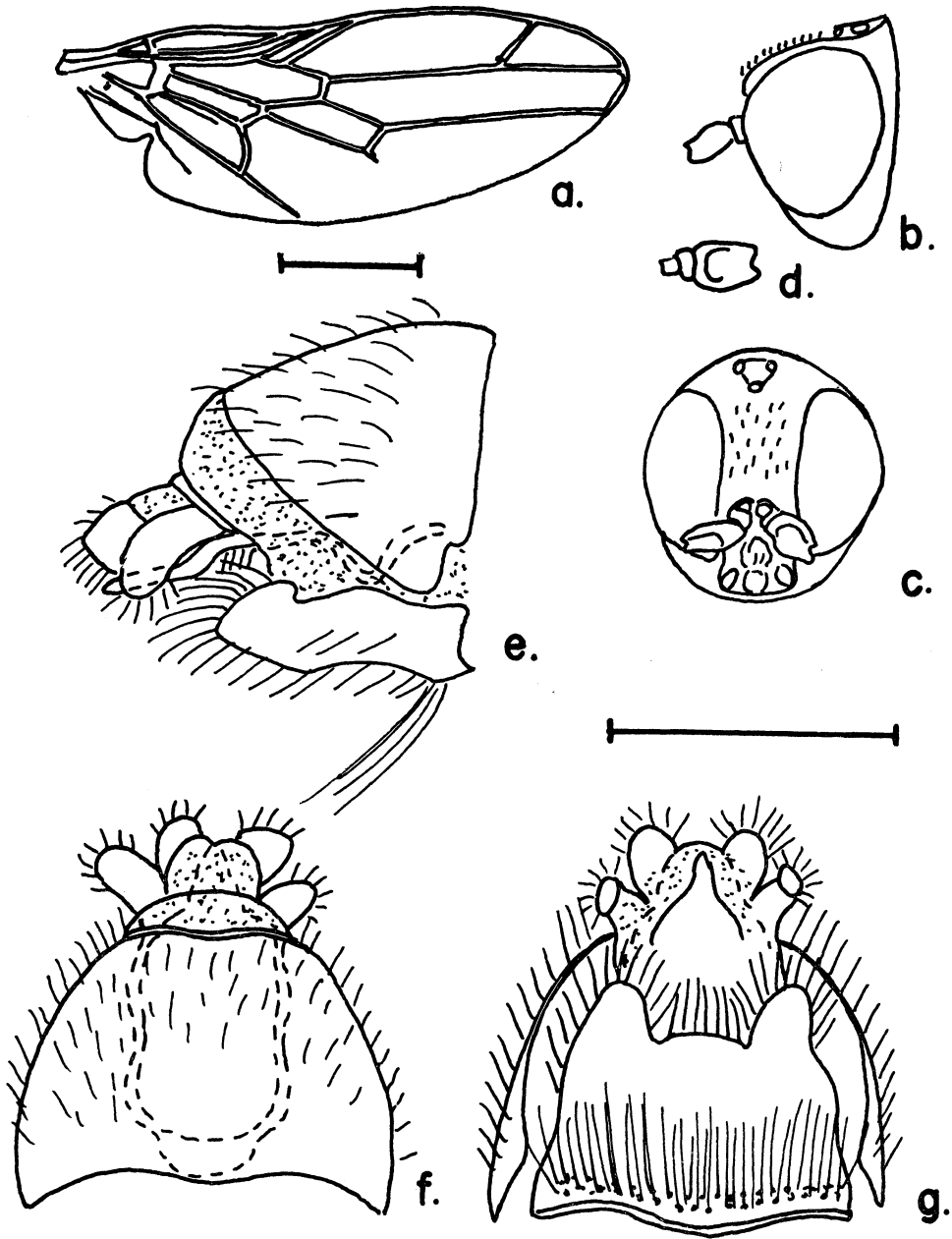


Fig. 6. *Seguyella maai* new species, ♀: a, wing; b, c, lateral and frontal aspect of head; d, enlarged detail of antenna; e, f, g, lateral, dorsal and ventral aspects of 8th and 9th segments.

Length ♀ body 2 mm; wing 2 mm.

♂. Unknown.

Holotype ♀ (BISHOP 7490), Chang Mai (Doi Pui, 1360 m), NW Thailand, 2.V.1958, T. C. Maa (#214).

In addition to the above, the following Pacific species were found in the Bishop Museum Collections:

S. papuanus (Kröber)—1, Tapatapao, Upolu, Samoa. 1, Agiguan Island, Mariana Islands. 3, Guam.

S. biroi Kertész—Cairns, N. Queensland, Australia,

S. norrisi Kelsey—Brisbane, Queensland, Australia,

S. glabrifrons Meigen—Yokohama, Japan.

REFERENCES CITED

- Kelsey, L. P. 1969. A revision of the Scenopinidae of the World. *U. S. Nat. Mus. Bull.* 277: 1-336, 208 fig.
- Kröber, O. 1939. Beitrag zur Kenntnis der Therevidae und Omphralidae. *Ann. Mag. Nat. Hist.* ser. 11, 3: 395-400, 5 fig.